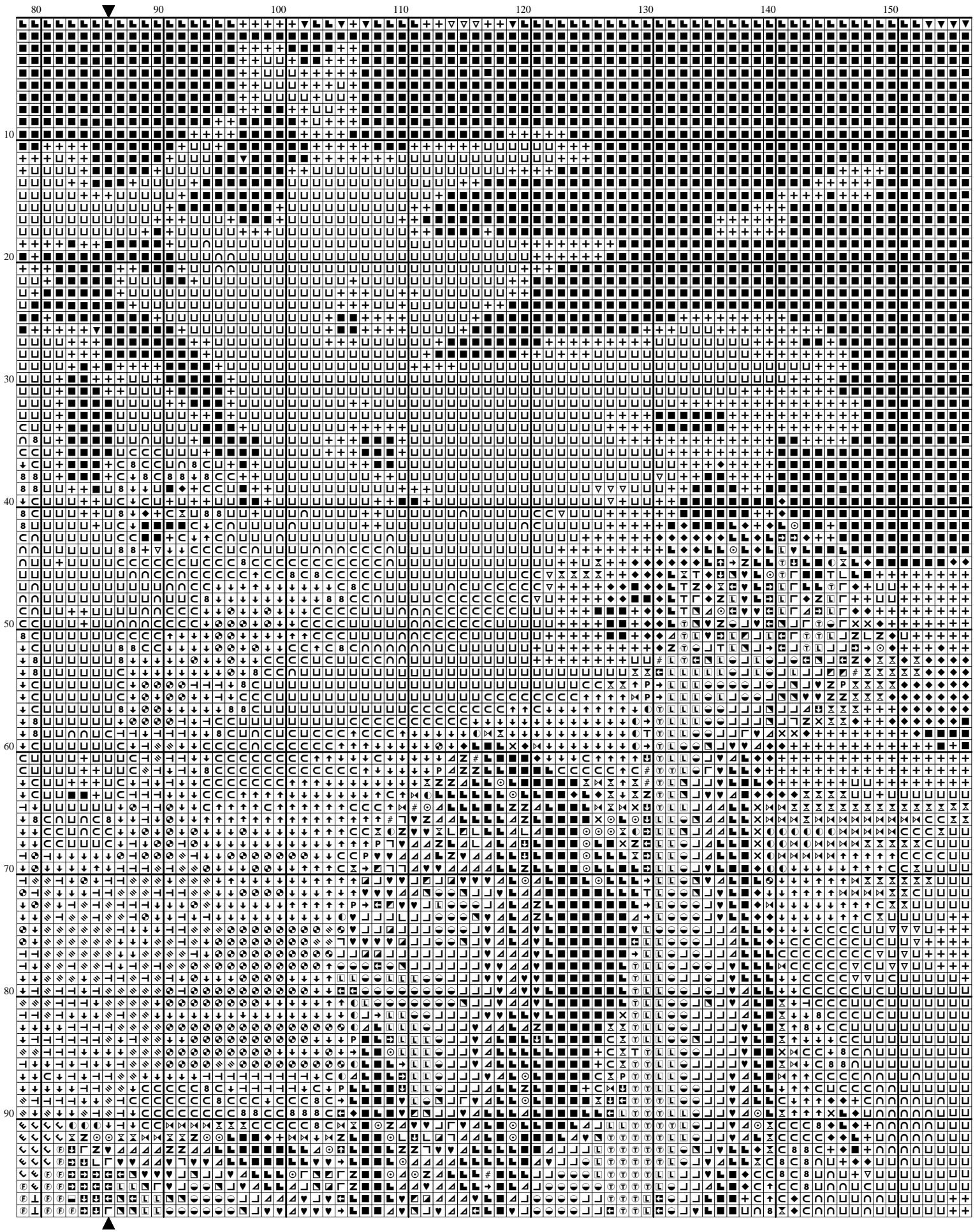
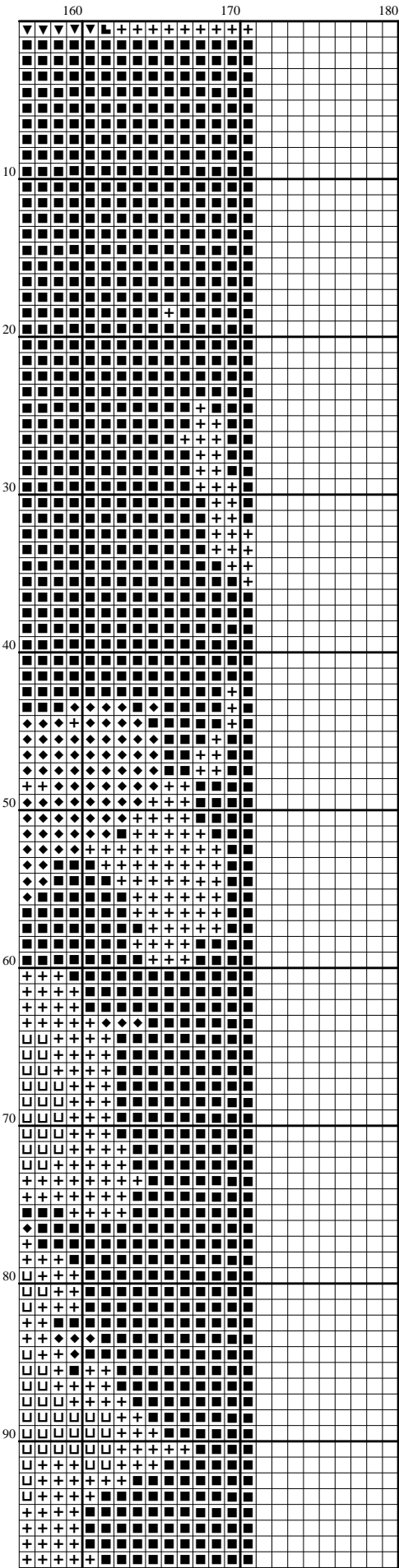


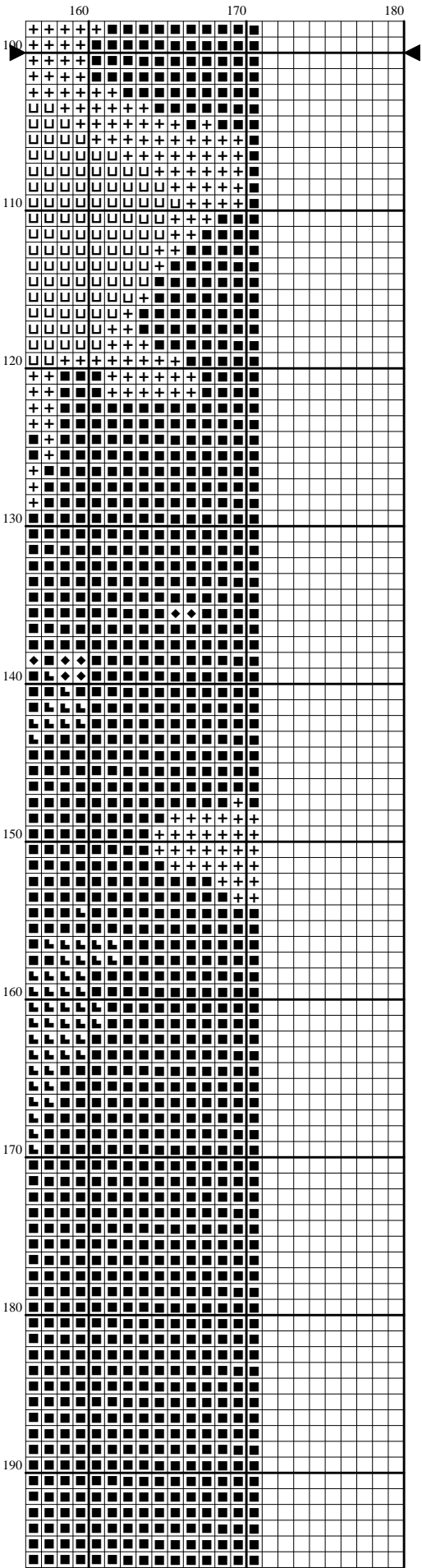
[illegible]

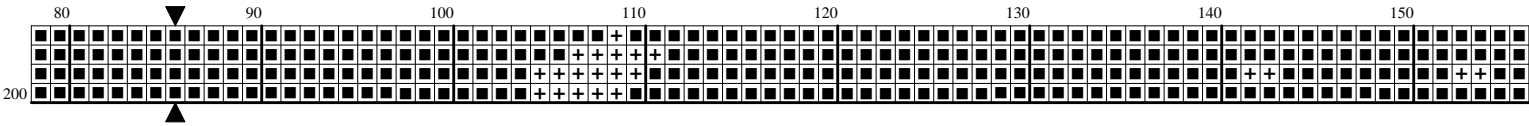




[illegible]

[illegible]





Instructions and Symbol Key for Design "calling the spirits"

Fabric: 14 count white Aida

Stitches: 171 x 200 **Size:** 12.21 x 14.29 inches or 31.02 x 36.29 cm

Colours: DMC

Use 2 strands of thread for cross stitch

<u>Sym</u>	<u>No.</u>	<u>Colour Name</u>	<u>Sym</u>	<u>No.</u>	<u>Colour Name</u>
■	939	Navy blue - vy dk	▼	823	Navy blue - dk
◆	154	Very Dark Red	⬇	3371	Black brown
◻	820	Royal blue - vy dk	+	336	Navy blue
▽	796	Royal blue - dk	▲	814	Garnet - dk
×	902	Garnet - vy dk	⊙	3857	3857
♥	815	Garnet - med	#	3685	Mauve - dk
⌘	221	Shell pink - vy dk	⌘	327	Violet - dk
⌘	869	Hazelnut brown - vy dk	⌘	3835	3835
◻	792	Cornflower blue - dk	◻	3746	Blue violet - dk
◻	817	Coral red - vy dk	◻	3777	Terra cotta - vy dk
◻	919	Red copper	◻	355	Terra cotta - dk
◻	347	Salmon - vy dk	◻	900	Burnt orange - dk
◻	920	Copped - med	◻	780	Topaz - ultra vy dk
◻	782	Topaz - dk	◻	832	Golden olive
◻	921	Copper	◻	3852	3852
◻	3772	Flesh - dk	◻	720	Orange spice - dk
◻	3778	Terra cotta - lt	◻	208	Lavender - vy dk
◻	209	Lavender - dk	◻	3727	Antique mauve - lt
◻	554	Violet - lt	◻	3827	Golden brown - vy lt
◻	307	Lemon	◻	3822	Straw - lt
◻	210	Lavender - med	◻	762	Pearl grey - vy lt
◻	778	Antique mauve - v lt	◻	3033	Mocha brown - lt
◻	155	Forget me not Blue	◻	917	Plum - med
◻	721	Orange spice - med	◻	422	Hazelnut brown - lt
◻	972	Canary - deep			

This chart has been designed and printed with our best intentions of being without mistakes. However, the possibility of human error, printing mistakes or the variation of individual stitching does exist, and we regret that we cannot be responsible for this.

Produced using Cross Stitch Profesional for Windows www.dpsoftware.co.uk
Copyright © mgtz 2007 All rights reserved.